



Importance of Stormwater Management and the Stormwater Charge

You may notice an increase to the stormwater charge in 2024 which will be collected in 10 instalments from March to December as approved by Newmarket Council.

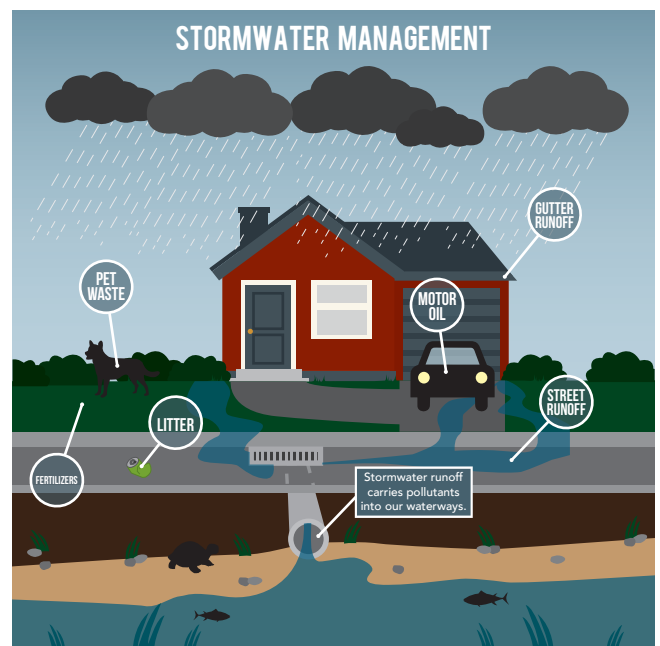
This increase is a result of aging infrastructure that needs to be replaced in the near future, inflation and the continuous rise in construction costs. Without proper funding through the stormwater charge, your neighbourhood would be at risk of flooding and other negative effects caused by climate change and stormwater run-off.

What is the stormwater charge and why is stormwater management important?

Stormwater is the rain and melted snow that flows from your property, onto the street and into the storm drains. Along the way, stormwater picks up debris, chemicals and other pollutants from rooftops and paved surfaces that can upset the water quality of our lakes and rivers.

Stormwater management is essential to Newmarket. It reduces the negative effects of stormwater and lowers the risk of flooding that can damage your property and the environment. Today, stormwater is more of a challenge than ever before due to climate change.

The stormwater charge is used to fund Stormwater Management initiatives like low impact development (LID), pond clean-outs, and infrastructure replacement to minimize the negative impacts of stormwater runoff.



Residents can learn more about the stormwater charge by visiting newmarket.ca/stormwatercharge

Questions regarding your utility bill can be directed to NT Power by emailing enquiries@ntpower.ca or calling 905-895-2309

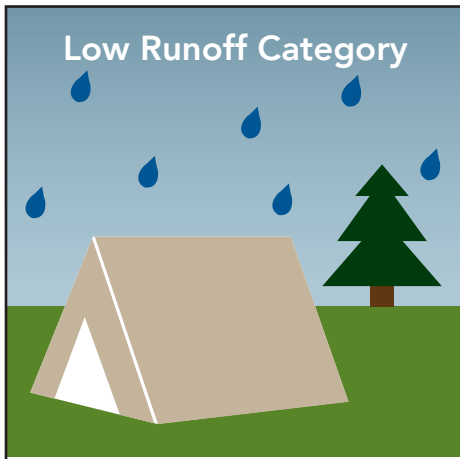
How is the stormwater charge calculated?

The stormwater charge is calculated by the:

Size of Property X Runoff Category Rate

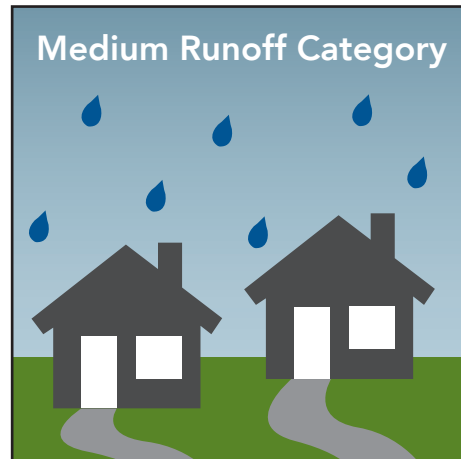
The majority of residential properties fall into the medium runoff category, while the majority of commercial and industrial buildings are charged the high runoff category.

Low Runoff Category



EXAMPLES: Natural areas, vacant properties (no buildings or parking lots), golf courses, etc.

Medium Runoff Category



EXAMPLES: Residential and institutional properties.

High Runoff Category



EXAMPLES: Commercial, industrial and mixed-use buildings.



DID YOU KNOW?

Newmarket requires all new development to have Low Impact Development (LID) features to reduce stormwater runoff.

To date, there are 165 development sites with LID and/or stormwater treatment. The Town also established over 70 LID elements at 20 locations in the community.



Residents can learn more about the stormwater charge by visiting newmarket.ca/stormwatercharge

Questions regarding your utility bill can be directed to NT Power by emailing enquiries@ntpower.ca or calling 905-895-2309